



## 7 Moorland Close, Bittaford

£259,950

3 1 2



A most spacious 3 bedroom semi detached house set on a wonderful southerly facing plot with elevated views within this popular cul de sac. The house offers an entrance hall, living room, dining room, kitchen and cloakroom on the ground floor, together with the 3 bedrooms and bathroom on the upper floor. The house has Upvc double glazing and gas central heating. Externally there is a southerly facing rear garden. EPC D 65.



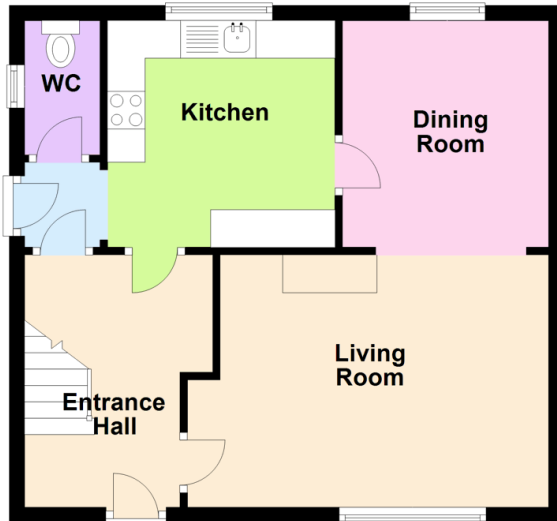
# MILLINGTON TUNNICLIFF

[www.millingtontunncliff.co.uk](http://www.millingtontunncliff.co.uk)

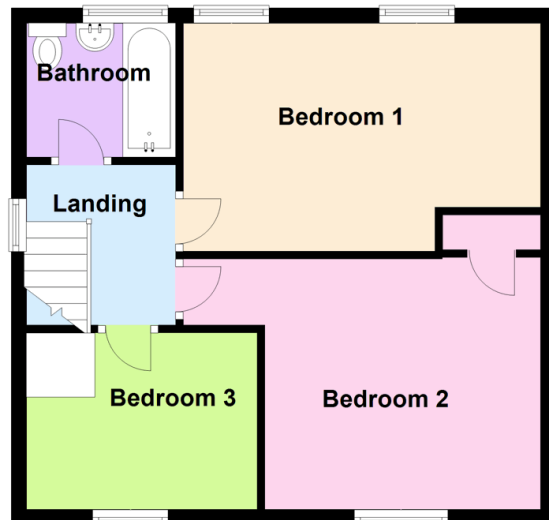
## Key Features

- 3 Bedroom Semi Detached House
- Pleasant Rear Garden
- Elevated Southerly Views
- 2 Reception Rooms
- Modern Kitchen
- Gas Central Heating
- Upvc Double Glazing
- Cloakroom
- Popular Cul De Sac
- Spacious Accommodation

Ground Floor



First Floor



01752 896020 | [info@millingtontunncliff.co.uk](mailto:info@millingtontunncliff.co.uk) | 19 Fore Street, Ivybridge, Devon, PL21 9AB